

NEWS

helmets / e-bike / lights / locks

e.w
eWheel

www.ewheel.es

SCOOTERS IN EUROPE Nº1 ACCESSORIES FOR ELECTRIC

e.W

eWheel



index

/ HELMETS	5.
/ eBIKES	21.
/ LIGHTS	29.
/ LOCKS	37.





helmets

helmets <\/a> <\/a> <\/a> <\/a> <\/a>

SPORT HELMET CP04



Helmet with front and rear lights.
Improves visibility in night conditions.
Breathable and high impact resistance.
Sport design.
Option for turn signals with remote control.

Material: PC+EPS
Weight: 230-260 g
Certification: UNE-EN 1078:2012+A1:2012
Colors:



Size M / 55-58 cm

MATTE BLACK / EAN: 8435764421952

BLUE / EAN: 8435764421969

MATTE BLACK + TURN SIGNALS + REMOTE CONTROL / EAN: 8435764421990

Size L / 59-61 cm

MATTE BLACK / EAN: 8435764421976

BLUE / EAN: 8435764421983

MATTE BLACK + TURN SIGNALS + REMOTE CONTROL / EAN: 8435764422003

SPORT HELMET CP02



SPORT
HELMET



Helmet with front and rear lights.
Improves visibility in night conditions.
Breathable and high impact resistance.
Sport design.
Option for turn signals with remote control.

Material: PC+EPS
Weight: 250-360 g
Certification: UNE-EN 1078:2012+A1:2012
Colors:



Size M / L
MATTE BLACK / EAN: 8435764421938
MATTE BLACK + TURN SIGNALS + REMOTE CONTROL / EAN: 8435764421945

SPORT HELMET CP03



SPORT
SPORT
SPORT



Helmet with rear light.
Magnetic lens.
Sport design.
Option for turn signals with remote control.

Material: PC+EPS
Weight: 280-350 g
Certification: UNE-EN 1078:2012+A1:2012
Colors:



Size M / L
MATTE BLACK / EAN: 8435764422010
MATTE BLACK + TURN SIGNALS + REMOTE CONTROL / EAN: 8435764422027

SPORT HELMET CB06



Helmet for electric scooters and bicycles.
Breathable and high impact resistance.
Sport design.

Material: PC+EPS
Weight: 350 gr.
Certification: UNE-EN 1078:2012+A1:2012
Colors:



Size M / 55-58 cm
MATTE BLACK / EAN: 8435764427831

Size L / 58-61 cm
MATTE BLACK / EAN: 8435764427824

SPORT HELMET

CP06



Casco para patinete eléctricos y bicicletas.
Transpirable y alta resistencia a golpes.
Sport design.

Material: PC+EPS
Weight: 680-800 gr.
Certification: UNE-EN 1078:2012+A1:2012
Colors:



Size M / 55-58 cm

MATTE BLACK / EAN: 8435764427572
CAMOUFLAGE / EAN: 8435764427596

Size L / 59-61 cm

MATTE BLACK / EAN: 8435764427565
CAMOUFLAGE / EAN: 8435764427589

URBAN HELMET CP05



Helmet with front and rear lights.
Improves visibility in night conditions.
Breathable and high impact resistance.
Urban design.

Material: ABS+EPS
Peso: 480-530 gr.
Certification: UNE-EN 1078:2012+A1:2012
Colors:



Size M / 55-58 cm
MATTE BLACK / EAN: 8435764427534
GREY / EAN: 8435764427558

Size L / 59-61 cm
MATTE BLACK / EAN: 8435764427527
GREY / EAN: 8435764427541

URBAN HELMET

CP07



Helmet with front and rear lights.
Improves visibility in night conditions.
Breathable and high impact resistance.
Urban design.

Material: PC+EPS
Weight: 390 gr.
Certification: UNE-EN 1078:2012+A1:2012
Colors:



Size M / 55-58 cm

MATTE BLACK / EAN: 8435764427756
WHITE / EAN: 8435764427770
BLUE / EAN: 8435764427794

Size L / 58-61 cm

MATTE BLACK / EAN: 8435764427749
WHITE / EAN: 8435764427763
BLUE / EAN: 8435764427787

URBAN HELMET CP08



URBAN



Helmet with front and rear lights.
Improves visibility in night conditions.
Breathable and high impact resistance.
Built-in speakers.
Urban design.

Material: PC+EPS
Weight: 250 gr.
Certification: UNE-EN 1078:2012+A1:2012
Colors:



Size M / 55-58 cm
MATTE BLACK / EAN: 8435764427817

Size L / 58-61 cm
MATTE BLACK / EAN: 8435764427800

URBAN HELMET CP05



Helmet for electric scooters and bicycles.
Breathable and high impact resistance.
Urban design.

Material: PC+EPS

Weight: 250 gr.

Certification: UNE-EN 1078:2012+A1:2012

Colors:



Size M / 55-58 cm

MATTE BLACK / EAN: 8435764427534

Size L / 58-61 cm

MATTE BLACK / EAN: 8435764427527

URBAN HELMET CB01



URBAN



Helmet for electric scooters and bicycles.
Breathable and high impact resistance.
Urban design.

Material: ABS+EPS
Weight: 430-480 g
Certification: UNE-EN 1078:2012+A1:2012
Colors:



Size M / 55-58 cm

MATTE BLACK / EAN: 8435764421839
WHITE / EAN: 8435764421853
BLUE / EAN: 8435764421846

Size L / 59-61 cm

MATTE BLACK / EAN: 8435764421860
WHITE / EAN: 8435764421884
BLUE / EAN: 8435764421877

URBAN HELMET

CB02



Helmet for electric scooters and bicycles.
Breathable and high impact resistance.
Urban design.

Material: ABS+EPS
Weight: 390-410 g
Certification: UNE-EN 1078:2012+A1:2012
Colors:



Size M / 55-58 cm
MATTE BLACK / EAN: 8435764422034

Size L / 59-61 cm
MATTE BLACK / EAN: 8435764422041

URBAN HELMET CB04



Helmet for electric scooters and bicycles.
Breathable and high impact resistance.
Urban design.

Material: PC+EPS
Weight: 430-480 gr.
Certification: UNE-EN 1078:2012+A1:2012
Colors:



Size S / 53-55 cm

MATTE BLACK / EAN: 8435764427633
ROSA / EAN: 8435764427664

Size M / 55-68 cm

MATTE BLACK / EAN: 8435764427626
BLUE / EAN: 8435764427657
PINK / EAN: 8435764427664
WHITE / EAN: 8435764427718

Size L / 58-61 cm

MATTE BLACK / EAN: 8435764427619
BLUE / EAN: 8435764427640
WHITE / EAN: 8435764427701

URBAN HELMET

CB03



Helmet for electric scooters and bicycles.
Breathable and high impact resistance.
Urban design.

Material: PC+EPS
Weight: 190-210 gr.
Certification: UNE-EN 1078:2012+A1:2012
Colors:



Size S / 50-54 cm
MATTE BLACK / EAN: 8435764427459
PINK / EAN: 8435764427473
BLUE / EAN: 8435764427466

STYLE HELMET CP01



Helmet with fabric cover, cap model.
Washable, breathable, and high impact resistance.

Material: PC+EPS
Weight: 210-230 g
Certification: UNE-EN 1078:2012+A1:2012
Colors:



Size M / L
GREEN / EAN: 8435764421907
BLUE / EAN: 8435764421891

STYLE HELMET CP01



Helmet with fabric cover, hat model.
Washable, breathable, and high impact resistance.

Material: PC+EPS
Weight: 210-230 g
Certification: UNE-EN 1078:2012+A1:2012
Colors:



Size M / L
GREEN / EAN: 8435764421921
BLUE / EAN: 8435764421914

eBikes



eBike - Lights - Locks

eBIKE ANTARES

Enjoy a different experience.

The eWheel city range represents movement, balance, comfort, and efficiency...

Antares graduates with honors in high-quality ergonomic technology, thanks to its "core-skin" design with a reinforced double aluminum frame.



SPECIFICATIONS

Dimensions: 1800 X 680 X 1100 mm
 Weight: 26.5 kg
 Max Speed: 24.9 km/h
 Battery: 36V - 10A lithium-ion battery
 Max Load: 120 kg
 Wheels: 700c X 38c
 Charger: 42V 2A
 Charging Time: 5-6 hours
 Display: LCD
 Front Light: LED
 Rear Light: LED
 Seat: Goma Royale - adjustable height
 Gears: SHIMANO 6-speed
 Brakes: Front and rear disc brakes
 Suspension: Front fork
 Torque Sensor
 Colors:



 EAN: 8437025557004



 EAN: 8437025557011



 EAN: 8437025557028



eBIKE ARTURO

Discover more possibilities, rediscover the city.

The eWheel city range makes your life lighter; its lightweight aluminum frame integrates a removable lithium battery module so you can charge it anywhere, and an extra comfort seat with an easy-release adjustable post.

Safer, Arturo helps prevent accidents with its combined braking system and disc brakes on both wheels.



SPECIFICATIONS

- Dimensions: 1800 X 680 X 1080 mm
- Weight: 24.5 kg
- Max Speed: 24.9 km/h
- Battery: 36V - 10A lithium-ion battery
- Max Load: 120 kg
- Wheels: 700c X 38c
- Charger: 42V 2A
- Charging Time: 5-6 hours
- Display: LCD
- Front Light: LED
- Rear Light: LED
- Seat: Goma Royale - adjustable height
- Gears: SHIMANO 6-speed
- Brakes: Front and rear disc brakes
- Suspension: Front fork
- Torque Sensor
- Colors:



EAN: 8437025557042



EAN: 8437025557035



eBIKE ATRIA

New eRoad Model

Atria is specially designed to maximize the advantages of its dimensions and materials, ensuring balance and achieving maximum performance with each pedal stroke, making it an efficient bicycle.

The innovative brushless motor technology it incorporates makes cycling even easier and more comfortable.



SPECIFICATIONS

Dimensions: 1820 X 620 X 1060 mm
 Weight: 21.5 kg
 Max Speed: 24.9 km/h
 Battery: 36V - 10A lithium-ion battery
 Max Load: 120 kg
 Wheels: 700c X 38c
 Charger: 42V 2A
 Charging Time: 5-6 hours
 Display: LCD
 Front Light: LED
 Rear Light: NO
 Seat: Goma Royale - adjustable height
 Gears: SHIMANO 6-speed
 Brakes: Front and rear disc brakes
 Suspension: Front fork
 Torque Sensor
 Colors:



 EAN: 8437025557066



 EAN: 8437025557059



eBIKE SPICA

The mountain is calling.

Get the most out of every ride and go further than ever before. With Spica, you can tackle the toughest terrains without reaching your VO2Max or pushing too hard on the return.

Our Spica features a specially integrated frame battery for better weight distribution, a front fork, a waterproof LED headlight, and special anti-slip grips.



SPECIFICATIONS

Dimensions: 1850 X 700 X 1120 mm
 Weight: 23 kg
 Max Speed: 24.9 km/h
 Battery: 36V - 10A lithium-ion battery, PRO Max. removable
 Max Load: 120 kg
 Wheels: 27.5 X 2.35
 Charger: 42V 2A
 Charging Time: 5-6 hours
 Display: LCD
 Front Light: LED
 Rear Light: NO
 Seat: Goma Royale - adjustable height
 Gears: SHIMANO 7-speed
 Brakes: Front and rear disc brakes
 Suspension: Front fork
 Torque Sensor
 Colors:



EAN: 8437025557110



EAN: 8437025557103



eBIKE SIRIO

Discover our Sirio, the most versatile star of eWheel.

Have you ever seen a folding bike with front suspension?

Because obstacles are not only found in the mountains. Sirio absorbs impacts like you never thought possible with a folding bike thanks to its front fork, and its frame is more robust than any other folding bike, ensuring its durability.



SPECIFICATIONS

Dimensions: 1600 X 590 X 1080 mm
 Weight: 22 kg
 Max Speed: 24.9 km/h
 Battery: 36V - 10A lithium-ion battery
 Max Load: 120 kg
 Wheels: 20 X 1.95
 Charger: 42V 2A
 Charging Time: 5-6 hours
 Display: LCD
 Front Light: LED
 Rear Light: LED
 Seat: Goma Royale - adjustable height
 Gears: SHIMANO 6-speed
 Brakes: Front and rear disc brakes
 Suspension: Front fork
 Torque Sensor
 Colors:



EAN: 8437025557097



EAN: 8437025557080



eBIKE TAURO

Are you more of a beach or mountain person?

Thanks to its stronger frame and front fork, Tauro is suitable for tougher trails, practically "off-road," such as snow, sand, dirt, mud, cobblestone pavement, or forests; it will absorb all the impacts!

Its wider low-pressure tires will maximize grip and adapt to the terrain to prevent slipping.



SPECIFICATIONS

Dimensions: 1630 X 720 X 1200 mm
 Weight: 22 kg
 Max Speed: 24.9 km/h
 Battery: 36V - 10A lithium-ion battery
 Max Load: 120 kg
 Wheels: 20 X 3.0
 Charger: 42V 2A
 Charging Time: 5-6 hours
 Display: LCD
 Front Light: LED
 Rear Light: LED
 Seat: Goma Royale - adjustable height
 Wiring: Waterproof cables
 Gears: SHIMANO 6-speed
 Brakes: Front and rear disc brakes
 Suspension: Front fork
 Torque Sensor
 Colors:



EAN: 8437025557134



EAN: 8437025557127



eBIKE M20X

Adventure awaits!

The all-terrain electric bike is the perfect companion for any adventure. Thanks to its innovative design, this bike is equipped to tackle any terrain you wish to explore.

Its reinforced chassis offers a robust and durable structure, while its extra-wide tires provide exceptional traction on various surfaces.



SPECIFICATIONS

Dimensions: 1630 X 720 X 1200 mm.
 Weight: 26,6 kg.
 Max Speed: 24.9 km/h
 Battery: 36V - 10A lithium-ion battery
 Max Load: 120 kg
 Wheels: 20 X 1.95
 Charger: 42V 2A
 Charging Time: 5-6 hours
 Display: LCD
 Front Light: LED
 Rear Light: LED
 Seat: Fixed height
 Gears: SHIMANO 6-speed
 Brakes: Front and rear disc brakes
 Suspension: Front fork
 Torque Sensor
 Colors:



EAN: 8435764423802





lights

lights - 100%
helmet - 100%

Rechargeable headlight EWL015



RECHARGEABLE LED HEADLIGHT

Functions: 100% Brightness - 50% Brightness - 25% Brightness - Flash - Off.

Button press: (1s=<t<2s) to turn the light on and off.

Button press: (t<1s) to change the mode.

Battery: 18650 lithium battery, 3.7V/1800mAh.

Usage time: 2 hours (100%) / 4 hours (50%) / 16 hours (25%) / 3 to 4.5 hours (flashing) / 3.5 hours (breathing flash).

Low battery indicator.

Charging time: 4.5-5 hours.

Includes: USB Type-C cable.

Water resistance: IPX4.

Weight: 108g, size: 104x30x39mm.

EAN: 8435764422386

PVD. 3,55 €

Rechargeable headlight EWL014



RECHARGEABLE LED HEADLIGHT

With a switch for low beam and high beam using the up and down button. Pressing the button down, the low beam emits: 170 lm - 330 lm - 650 lm - 1300 lm - Flash - Breathing Flash - Off.

Pressing the button up activates the high beam: 340 lm - 660 lm - 1300 lm - 2600 lm - Flash - Breathing Flash - Off.

Button with red LED.

Powerbank function.

Charging and low battery indicator: The green indicator lights up when charging and turns off when charging is complete.

Low voltage indicator: The last battery indicator flashes.

Battery: 18650*2 Lithium battery.

Capacity: 3.7V / 6700mAh.

Water resistance: IPX5.

Weight: 180g.

Size: 100x42x32 mm.

EAN: 8435764422379

Rechargeable headlight EWL013



RECHARGEABLE LED HEADLIGHT

Specifications: Dual lens technology.

2 super bright white LEDs.

Functions: 100% Brightness - 50% Brightness - Flash - Breathing Flash - Off.

Double button press: Switches between high and low beams.

Cable: Type-C included.

Water resistance: IPX5.

Battery: Lithium battery, 3.7V / 5000mAh.

Usage time:

Low beam: 3 hours (100%) / 6 hours (50%) / 6 hours (flashing) / 6 hours (breathing).

High beam: 1.5 hours (100%) / 2 hours (50%) / 2 hours (flashing) / 2 hours (breathing).

EAN: 8435764422362

Rechargeable headlight EWL012



RECHARGEABLE LED HEADLIGHT

Light: 1 super bright white LED

Functions: 100% Brightness – 50% Brightness – Flash – Breathing – Shake.
Brightness: (15% Brightness, over 1.5 seconds 100% Brightness 250m back to 15% Brightness).

Button press: (1s=<t<2s) to turn off the light.

Battery: 18500 lithium battery 3.7V/1400mAh.

Includes rechargeable cable: Micro-USB.

Low battery indicator.

Usage time: 1h 20 min (100%) / 3h 20 min (50%) / 3h 20 min (flashing) / 3h 20 min (breathing) / 3h 20 min (daytime flash).

Charging time: 3 hours (the green indicator will light up when charging and turn off when charging is complete).

Weight: 118g.

Size: 87x56x30mm.

EAN: 8435764422355

Rechargeable headlight with computer EWL011



RECHARGEABLE LED HEADLIGHT WITH COMPUTER

Function: 100% brightness (60LUX) – 50% brightness (30LUX) – 25% brightness (15LUX) – off.

Battery: 18650 lithium battery, 3.7V / 2200mAh.

Usage time: 5 hours (100%); 10 hours (50%); 22 hours (25%).

Charging time: 4-5 hours.

Water resistance: IPX4.

Weight: 139g, size: 103x48x38mm.

EAN: 8435764422348

Cycle computer:

Multilingual (EN, GE, FR) wireless.
26 functions.

1. Current speed.
2. Speed comparator.
3. Clock.
4. Stopwatch (STW).
5. Distance traveled (DIST).
6. Ride time (RIDETM).
7. Average speed (AVGSPD).
8. Maximum speed (MAXSPD).
9. Total distance (ODO).
10. Total ride time (TOT TM).
11. Current temperature (TEMP°C).
12. Minimum temperature (MNTEMP).
13. Maximum temperature (MXTEMP).
14. Calorie rate (CAL).
15. Total calories consumed (TOTCAL).
16. Fat burn (FAT).
17. Target distance (KM +).
18. Target distance (KM -).
19. Target time (TIME +).
20. Target time (TIME -).
21. CO2 emissions reduction (CO2).
22. Planned distance (PLAN).
23. Automatic scan display mode (SCNAN).
24. Maintenance reminder.
25. Backlight.
26. Auto off.

Vest with turn signals EWC001



SIGNALING VEST

Reflective clothing with wireless turn signal lights.

Function: Left turn signal / Right turn signal / Forward signal / Stop signal / Wait signal.

Turn on the button switch on the clothing to enter standby mode.

Press the "R" button on the controller, and the green right turn signal will flash.

Press the "L" button on the controller, and the green left turn signal will flash.

Press the "Δ" button on the controller, and the green forward signal (diamond pattern) will flash.

Press the " " button on the controller, and the red stop signal (exclamation mark) will flash.

Press the white button (t>=1s) on the controller, and the green wait signal (line mark) will flash.

Other signals will switch to wait signal after being displayed continuously for 5 minutes.

If the wait signal continues for 1 hour, the lights will automatically turn off.

Charging indicator.

Battery: Lithium polymer battery.

Capacity: 3.7V/500mAh / CR2032x2.

EAN: 8435764422201

Position light belt EWL010



POSITION LIGHT BELT

Front light: 2 super bright white LEDs (150 lumens).

Rear light: 5 red LEDs.

Functions: (Front light) 100% Brightness - 50% Brightness - 30% Brightness.

(Rear light) Flash.

Long button press: (≥2s) to turn both front and rear lights on or off together.

Short button press: to change the function of the front light, while the rear light remains flashing.

Includes: USB Type-C cable.

Low battery indicator: during low battery state, the front light will automatically switch to 30% brightness mode and can last for 1 hour.

Battery: 3.7V/1800mAh lithium polymer battery.

Usage time: 5 hours (100%) / 7.5 hours (50%) / 12.5 hours (30%).

Charging time: 4-5 hours.

Water resistance: IPX4.

Weight: 166g, size: 102x43x28mm.

EAN: 8435764422331

Elastic band with position light EWL009



POSITION LIGHT ELASTIC BAND

Magnetic running light.

4 super bright red LEDs.

Function: Flashes when it vibrates.

No battery needed.

Includes mounting belt.

Weight: 43g

Size: 64x30.5x23mm

EAN: 8435764422324

Rechargeable rear position light EWL008



RECHARGEABLE REAR POSITION LIGHT

1 unit (36 chips) COB + 1 unit (14 chips) COB LED.

Functions: Auto-On-Off, with brake function in both modes.

Brake function in auto mode: When external light is strong, both the main LED and the extra brake LED will light up when braking; when external light is weak, the main LED will remain on, and the extra brake LED will light up when braking.

EAN: 8435764422317

Rechargeable rear position light EWL007



RECHARGEABLE REAR POSITION LIGHT

1 unit (20 chips) high brightness red COB LED.

3 Lighting modes: 100% brightness – 50% brightness – 25% brightness.

3 Flashing modes: 100% flashing brightness – 50% flashing brightness – 25% flashing brightness.

Double press the button to switch between steady and flashing modes.

Long press the button to turn off.

EAN: 8435764422300

Front/Rear position light EWL006



FRONT/REAR POSITION LIGHT

5 white/red LEDs.

Function: Flashing – Off.

Battery: AAx2 (Not Included).

Weight: 35g/pc.

Size: 63x39x23 mm.

EAN: 8435764422294

Front/Rear position light EWL005



RECHARGEABLE FRONT/REAR POSITION LIGHT

3 white/red LEDs.

Function: Chase – Flash – Off.

Battery: AAx2 (Not Included).

Weight: 49g/pc.

Size: 64x40x27 mm.

EAN: 8435764422287

Rechargeable rear position light EWL004



Rechargeable front/rear position light EWL004



Rechargeable front/rear position light EWL005



RECHARGEABLE REAR POSITION LIGHT

36 high brightness red LED chips.

Functions: 70% Brightness - 100% Brightness - Breathing Flash - Flash - Off.

Short press to change the function, long press to turn off the lights.

Battery: 3.7V/300mAh lithium polymer battery.

Cable: Type-C included.

Low battery indicator.

Charging time: Around 3 hours (the green indicator will light up during charging and turn off when charging is complete).

Weight: 48g/pc.

Size: 41x38x23 mm.

EAN: 8435764422270

RECHARGEABLE FRONT/REAR POSITION LIGHT

140 high brightness LED chips.

Functions: 100% Brightness - "X" Brightness - 6 Flashes - Off.

Short press to change the function, long press to turn off the lights.

Battery: 3.7V/300mAh lithium polymer battery.

Cable: Micro-USB included.

Low battery indicator.

Charging time: Around 3 hours (the green indicator will light up during charging and turn off when charging is complete).

Weight: 48g/pc.

Size: 41x38x23 mm.

EAN: 8435764422263

RECHARGEABLE FRONT/REAR POSITION LIGHT

18 high brightness LED chips.

Functions: 3 lighting modes: 100% brightness - 50% brightness - 25% brightness.

3 flashing modes: 100% flashing brightness - 50% flashing brightness - 25% flashing brightness.

Double press the button to switch from lighting mode to flashing mode.

Press the button (1s=<t<2s) to turn off the light.

Battery: 3.7V/260mAh lithium polymer battery.

Cable: Type-C included.

Low battery indicator.

Charging time: Approximately 3 hours.

Weight: 44g/unit.

Size: 43x41x21mm.

EAN: 8435764422256

Rechargeable rear position light EWL002



Rechargeable front/rear position light EWL002



Rechargeable front/rear position light EWL001



RECHARGEABLE REAR POSITION LIGHT

1 piece (84 chips) multicolor rectangular COB LED ring of high brightness colors.

4 lighting modes: Eco Beam (15%) - Normal Beam (30%) - Medium Beam (50%) - High Beam (100%).

4 flashing modes: Slow Flash with Normal Beam - Slow Flash with Medium Beam - Slow Flash with High Beam - Fast Flash with Medium Beam. Water resistance: IPX4.

Battery: 3.7V/700mAh lithium polymer battery.

Lithium battery with PCM (power circuit module), providing overcharge (OVP) and over-discharge (UVP) detection.

Cable: Includes Type-C rechargeable cable.

Charging time: Approximately 3 hours.

Weight: 52g/piece.

Size: 97x23x22mm.

EAN: 8435764422249

RECHARGEABLE FRONT/REAR POSITION LIGHT

1 piece (84 chips) multicolor rectangular COB LED ring of high brightness colors.

4 lighting modes: Eco Beam (15%) - Normal Beam (30%) - Medium Beam (50%) - High Beam (100%).

4 flashing modes: Slow Flash with Normal Beam - Slow Flash with Medium Beam - Slow Flash with High Beam - Fast Flash with Medium Beam. Water resistance: IPX4.

Battery: 3.7V/700mAh lithium polymer battery.

Lithium battery with PCM (power circuit module), providing overcharge (OVP) and over-discharge (UVP) detection.

Cable: Includes Type-C rechargeable cable.

Charging time: Approximately 3 hours.

Weight: 52g/piece.

Size: 97x23x22mm.

EAN: 8435764422232

RECHARGEABLE FRONT/REAR POSITION LIGHT

One super bright white/red LED.

Functions: Steady (3.5hrs) - Flashing (7hrs) - Off.

Battery: 3.6V/80mAh lithium polymer battery.

Lithium battery with PCM (power circuit module), providing overcharge (OVP) and over-discharge (UVP) detection.

Low battery indicator.

Cable: Includes Micro-USB cable.

Charging time: Approximately 2.5 - 3 hours (The indicator will be green during charging and turn off when charging is complete).

EAN: 8435764422225





locks

Supermarket

Handcuff lock EWLK010



Security level



HANDCUFF LOCK

The access code can be retrieved and reset with the key.
The swiveling joints allow for flexible locking of two separate objects.
The 75 mm diameter handcuff lock is suitable for a wide range of situations.

Recommended for two-wheeled vehicles with a medium theft risk.

EAN: 8435764422577

Handcuff lock with key EWLK019



Security level



HANDCUFF LOCK WITH KEY

EAN: 8435764422669

Handcuff lock with key EWLK020



Security level



HANDCUFF LOCK WITH KEY

EAN: 8435764422676

Chain lock with key EWLK011



Security level



CHAIN LOCK WITH KEY

EAN: 8435764422584

Chain lock with password EWLK013



Security level



CHAIN LOCK WITH PASSWORD

1. Set the wheels to 00000 and open the lock.
2. Turn the gear visible on the side of the lock labeled "Knob" 90 degrees clockwise to RESET.
3. Choose the new combination and return the knob to its initial state (90 degrees counterclockwise).

EAN: 8435764422607

Chain lock with password EWLK017



Security level



CHAIN LOCK WITH PASSWORD

1. Set the wheels to 00000 and open the lock.
2. Turn the gear visible on the side of the lock labeled "Knob" 90 degrees clockwise to RESET.
3. Choose the new combination and return the knob to its initial state (90 degrees counterclockwise).

EAN: 8435764422645

Chain lock with key EWLK018



Security level



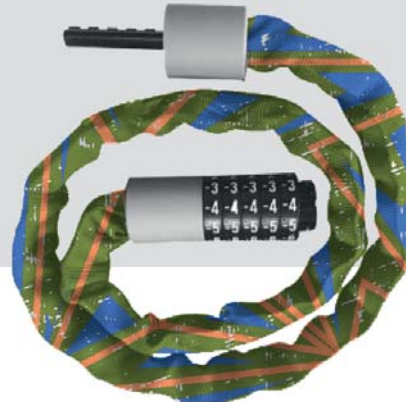
∅ 60 mm.

90 cm.

CHAIN LOCK WITH KEY

EAN: 8435764422652

Chain lock with password and design cover EWLK022



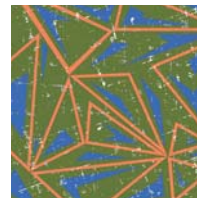
Security level



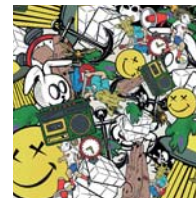
CHAIN LOCK WITH PASSWORD AND DESIGN COVER



EAN: 8435764422690



EAN: 8435764422706



EAN: 8435764422713

Zipper lock with password EWLK027



Security level



314 mm.

ZIPPER LOCK WITH PASSWORD

1. Set the wheels to 000 and open the lock.
2. Turn the gear visible on the side of the lock labeled "Knob" 90 degrees clockwise to RESET.
3. Choose the new combination and return the knob to its initial state (90 degrees counterclockwise).

EAN: 8435764422812

U-lock with key
EWLK028



Security level



165x250 mm.

U-LOCK WITH KEY

EAN: 8435764422829

U-lock with key
EWLK021



Security level



100x192 mm.

U-LOCK WITH KEY

EAN: 8435764422683


U-lock with key
EWLK023




Security level



U-LOCK WITH KEY


EAN: 8435764422720


EAN: 8435764422737

Cable lock with password EWL012



Security level
Nivel de seguridad



Ø 12mm
65cm

Cable lock with password

1. Set the wheels to 0000 and open the lock.
2. Turn the gear visible on the side of the lock labeled "Knob" 90 degrees clockwise to RESET.
3. Choose the new combination and return the knob to its initial state (90 degrees counterclockwise).

EAN: 8435764422591

Cable lock with password EWLK024



Security level
Nivel de seguridad



Ø 12 mm.
100 cm.

Cable lock with password

1. Set the wheels to 0000 and open the lock.
2. Turn the gear visible on the side of the lock labeled "Knob" 90 degrees clockwise to RESET.
3. Choose the new combination and return the knob to its initial state (90 degrees counterclockwise).

EAN: 8435764422744

Cable lock with password EWLK025



Security level
Nivel de seguridad



Ø 10 mm.
65 cm.

Cable lock with password

1. Set the wheels to 0000 and open the lock.
2. Turn the gear visible on the side of the lock labeled "Knob" 90 degrees clockwise to RESET.
3. Choose the new combination and return the knob to its initial state (90 degrees counterclockwise).

EAN: 8435764422751

EAN: 8435764422768

EAN: 8435764422775

Cable lock with key EWLK014



Security level



Ø 15mm
150cm

CABLE LOCK WITH KEY

EAN: 8435764422614

Cable lock with key EWLK015



Security level



Ø 20mm
100cm

CABLE LOCK WITH KEY

EAN: 8435764422621

Cable lock with key EWLK016



Security level



Ø 10mm
65cm

CABLE LOCK WITH KEY

EAN: 8435764422638

Cable lock with key EWLK026

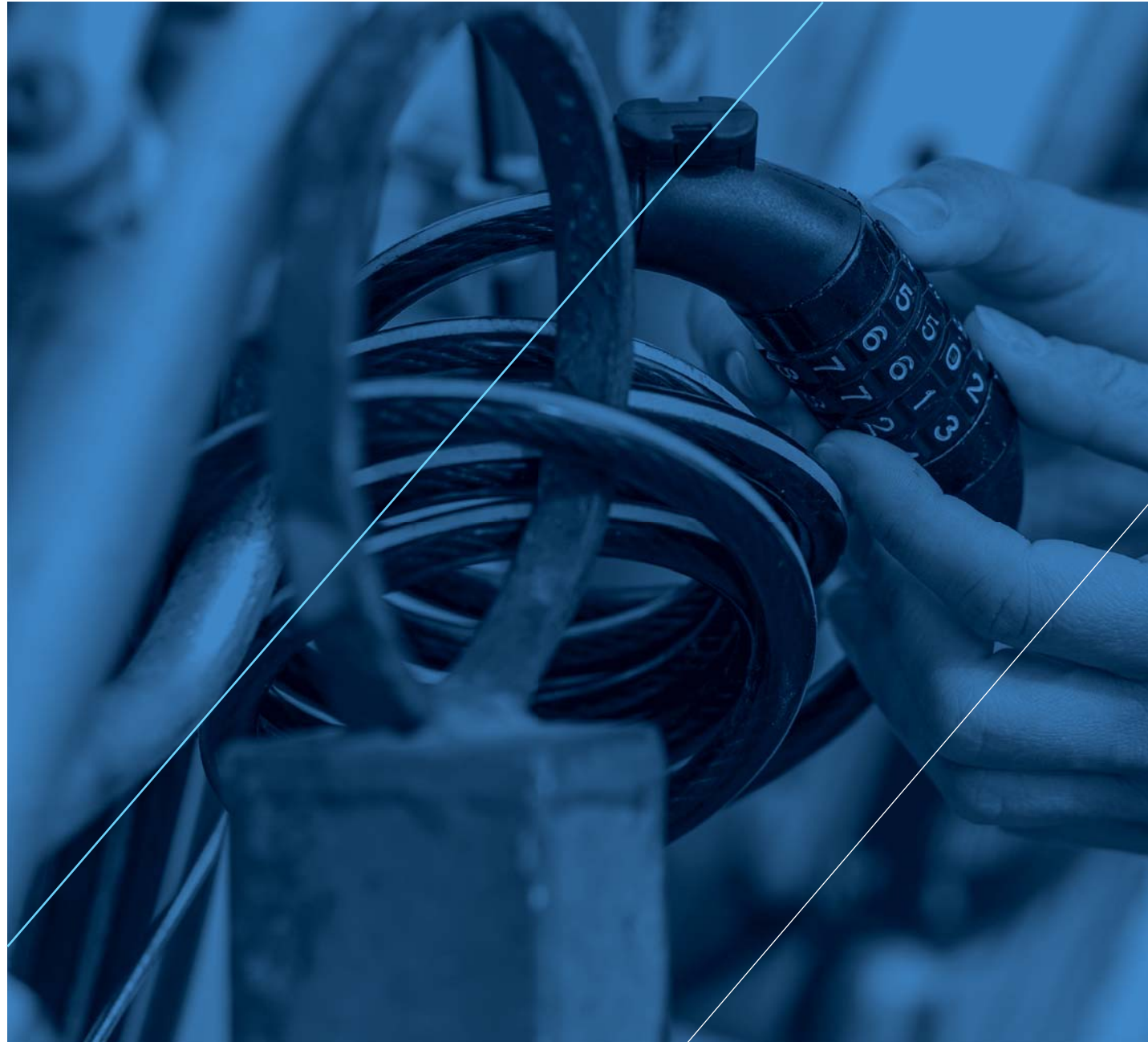


Security level



CABLE LOCK WITH KEY

EAN: 8435764422782





eWheel, a leader in the manufacturing, import, and distribution of spare parts and accessories for electric scooters in the European market.

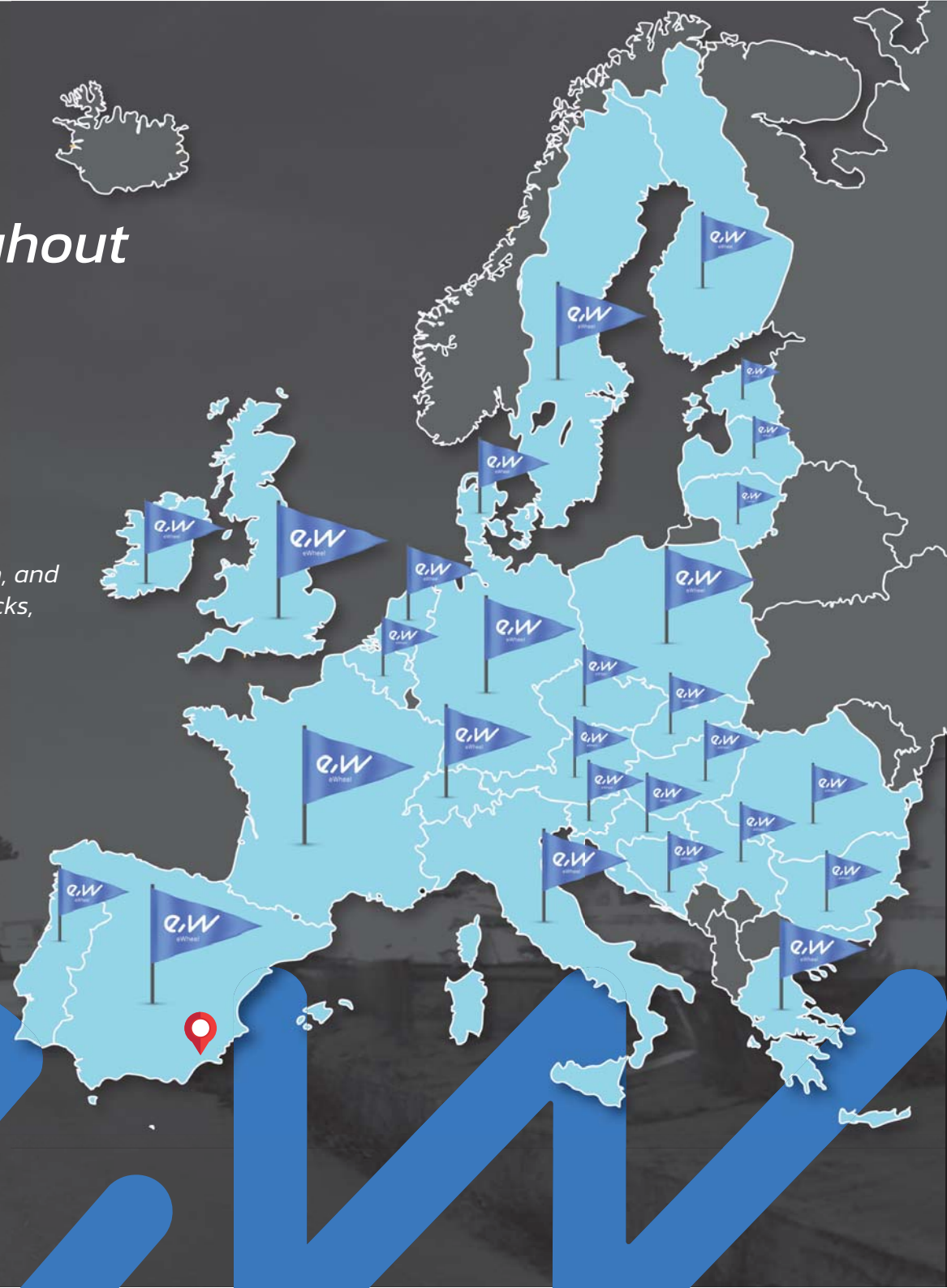
**new
facilities
7.000m²**

We are present throughout
Europe



We are located in Molina de Segura / Murcia / Spain, and our facilities include warehouses with loading docks, offices, and our own workshop.

*"Your satisfaction,
our priority."*





www.ewheel.es

