



a **WOLONG** company

2024

PRODUCT CATALOG



a **WOLONG** company

We are an ambitious Italian company with a global vision. **We design and produce complete drive systems for eBikes** in Cesena, nestled in the heart of the motor valley. This region, renowned for its rich automotive heritage, inspires us to innovate and excel in our field. Our products are designed with the future in mind, ensuring they are both cutting-edge and environmentally friendly.

Increasingly, OLI eBike Systems is establishing itself as an international partner. We are not only expanding our production facilities beyond Italy but also strategically positioning them to cater to the demands of global markets. This expansion is a testament to our dedication to growth and our ability to adapt to the ever-changing landscape of the eBike industry.

OLI eBike Systems is part of the **Wolong group**, a global leader in the production of electric motors and electric mobility solutions. Being part of such a prestigious group strengthens our capabilities and resources, allowing us to push the boundaries of what is possible in the realm of electric mobility. This affiliation underscores our commitment to a future that is both technologically advanced and environmentally sustainable.



ITALY
Headquarter
 R&D
 Technological service center
 Sales & Marketing



3
Production plants
 Italy, Vietnam, China



THE ONLY EUROPEAN ALTERNATIVE

Our History

- 2015**
OLI eBike Systems was founded
- 2017**
Move; the first drive unit produced by OLI eBike Systems
- 2022**
100.000 drive units sold in the calendar year
- 2024**
Pico; the only european alternative for LIGHT eCITY

6

European

OLI eBike
Subsidiaries



+2.500

European

Authorized
service center



ALTERNATIVE FOR LIGHT eCITY

European Locations



OLI eBike Germany/Benelux
Limburg, Germany



OLI eBike Spain
Barcelona, Spain



OLI eBike Nordic
Johanneshov, Sweden



OLI eBike Headquarter
Cesena, Italy



OLI eBike France
Saint-Avertin, France



OLI eBike UK
Nottingham, United Kingdom

DRIVE UNIT

NEW
DRIVE UNIT



PICO



EDGE



MOVE-N



SPORT

	eYOUTH	LIGHT eCITY	eCITY	eCARGO	eTREKKING	eMTB
URBAN	✓	✓	✓	✓		
SPORT					✓	✓

DISPLAY



	RING VISION	SIDE VISION	HIGH VISION
Screen Size	6 RGB Led	1,8"	2"
Handlebar bracket	22,2mm	22,2mm	31,8 mm - 35 mm
Twilight Sensor	Yes	No	Yes
Remote Controller	Yes	No	Yes
Walk Mode	Yes	Yes	Yes, on remote
OLI Pre-Set	No	No	Yes (Edge only)

OLI PRE-SET Customize EDGE behavior with OLI Pre-Set directly from the High Vision display



Power
Battery life
Ease of riding



Power
Battery life
Ease of riding



Power
Battery life
Ease of riding

BATTERY



> **370 Wh**
semi-integrated battery



> **520 Wh**
integrated battery



> **540 Wh**
integrated battery



> **630 Wh**
integrated battery



> **630 Wh**
semi-integrated battery



> **720 Wh**
integrated battery



> **800 Wh**
integrated battery

MAIN ACCESSORIES



> **SPEED SENSOR**
Available in two versions:
Chain Stay and **Disc Brake**



> **DISPLAY HANDLEBAR MOUNT**
Available in 35mm diameter
with reduction to 31.8mm



> **CHAIN GUIDE**
Keeps the chain on even on
the toughest mountain trail.



> **SPIDER**
104 BCD - 4 Holes pattern.
Available for **SPORT** and
MOVE-N in the line.

> **DIRECT MOUNT CHAINRING**
Available in the most common
sizes and offsets from the major
components manufactures.

> **LIGHT WIRE**
To connect lights to the
drive unit and control
them from remote.

PICO

THE ONLY EUROPEAN ALTERNATIVE FOR LIGHT eCITY

NEW

DRIVE UNIT



250W

Rated Power

70Nm

Max Torque

<2,5Kg

Weight

LIGHT eCITY

eCITY

eYOUTH

> THE ONLY EUROPEAN ALTERNATIVE

PICO is the new drive unit designed specifically for urban mobility. So small and well integrated into the frame, it makes an eBike look like a traditional bike.

It represents the only European alternative that offers the possibility of opening new markets for the design of light eCITY at unrivaled prices.

> TECHNOLOGY

It is capable of perfectly responding to the needs required by metropolitan transport, because with its 70Nm of torque it is not only reliable and high-performance, but it is incredibly compact and silent.

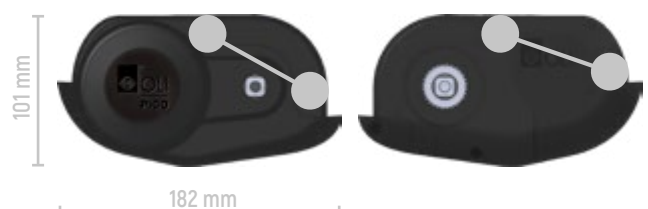
Extremely small size, just 182x101x155mm, and a weight of less than 2.5kg.

> CONNECTION PORTS

- Battery
- AUX
- Speed sensor
- Display
- Light rear
- Light front

> MOUNTING POINTS

Proprietary pattern with 4 fixing points



PICO	
Rated Power	250W
Rated Voltage	36V
Max Torque	70Nm
Internal Gear Stages	2
Weight	< 2,5Kg
Communication	UART / CAN BUS
Fixing Holes Pattern	2X2 M8 Proprietary pattern
Chain-line	50mm
Crank interface	JIS
Chainring options	Direct Mount or BCD 104 - 30/44T
Coaster brake option	Yes
Chain-guide and bashguard	Yes

DISPLAY



RING VISION



SIDE VISION



HIGH VISION

BATTERY



370 Wh
semi-integrated battery



520 Wh
integrated battery



540 Wh
integrated battery



630 Wh
integrated battery

CASE AND COVER



@Nuzzi Design



ACCESSORIES

CABLES COVER

CHAINLINE SPACER

CHAIN GUIDE

LOCK NUT

SPEED SENSOR, MAGNET, CABLE & HOLDER

LIGHT FRONT CABLE & LIGHT REAR CABLE

MOTOR TO BATTERY CABLE

DISPLAY CABLE

DIAGNOSTIC CABLE

EDGE

THE BEST FEELING WITH HIGH PERFORMANCES



250W

Rated Power

90Nm

Max Torque

3,2Kg

Weight

eMTB

eTREKKING

eCITY

eCARGO



OLI PRE-SET

Customize EDGE behavior with OLI Pre-Set directly from the High Vision display



Eco

Power

Battery life

Ease of riding



Comfort

Power

Battery life

Ease of riding



Power
WITH OVERRUN

Power

Battery life

Ease of riding

> POWER UNDER FINE-TUNED CONTROL

90Nm carefully distributed to deliver a natural pedalling feeling in any circumstance. Perfect match for Sport and urban need. Everything enclosed in a compact design at only 3,2Kg.

> CONNECTION PORTS

- Power
- Battery
- AUX
- Speed sensor
- Display
- Light rear
- Light front

> TECHNOLOGY

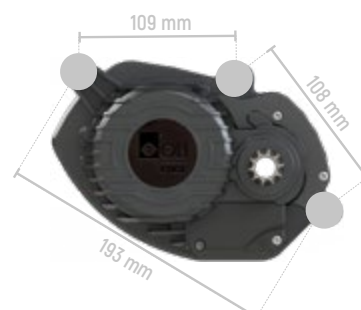
Innovative Vectorial Logic to manage electronics with customizable settings
4 Sided Torque sensor for a precise input control during pedaling.
36V lights management.

> MOUNTING POINTS

EDGE-BH



EDGE-SH



EDGE	
Rated Power	250W
Rated Voltage	36V
Max Torque	90Nm
Internal Gear Stages	3
Weight	3,2Kg
Communication	UART/CAN BUS
Fixing Holes Pattern	BH
Q-Factor	177mm
Chain-line	49mm
Crank interface	ISIS
Chainring options	Direct Mount or BCD 104 - 30/44T
Coaster brake option	No
Chain-guide and bashguard	ISCG05

DISPLAY



RING VISION



SIDE VISION



HIGH VISION
with OLI Pre-Set

BATTERY



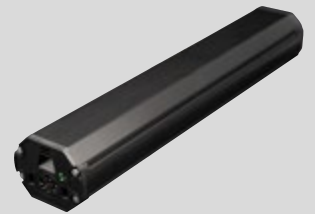
520 Wh
integrated battery



630 Wh
integrated battery



720 Wh
integrated battery



800 Wh
integrated battery

CASE AND COVER



@Nuzzi Design

ACCESSORIES

CABLES COVER

CHAINLINE SPACER

LOCK NUT

SPEED SENSOR, MAGNET, CABLE & HOLDER

LIGHT FRONT CABLE & LIGHT REAR CABLE

MOTOR TO BATTERY CABLE

DISPLAY CABLE

DIAGNOSTIC CABLE

MOVE-N

E-MOBILITY WITH NO FRILLS



250W

Rated Power

85Nm

Max Torque

3,9Kg

Weight

eCITY

eCARGO

eTREKKING

> OPTIMAL PERFORMANCE

Compatible with the most diffused mounting point pattern. This standardization ensures manufacturers the possibility of installation on existing frames, significantly reducing design investments.

Such flexibility is particularly advantageous in an industry where the speed of adaptation to emerging technologies is crucial.

> TECHNOLOGY

MOVE-N incorporates the advanced technology of OLI eBike Systems.

This integration guarantees optimal performance and an improved driving experience, placing MOVE-N at the forefront of the evolution of electric mobility on two wheels.

> CONNECTION PORTS

- Power
- Battery
- Speed sensor
- Display
- Light rear
- Light front

> MOUNTING POINTS



MOVE-N	
Rated Power	250W
Rated Voltage	36V
Max Torque	85Nm
Internal Gear Stages	2
Weight	3,9Kg
Communication	UART
Fixing Holes Pattern	BH
Q-Factor	178mm
Chain-line	52mm (142mm/148mm boost)
Crank interface	ISIS
Chainring options	BCD 104 - 30/44T
Coaster brake option	Yes
Chain-guide and bashguard	Yes

DISPLAY



RING VISION



SIDE VISION



HIGH VISION

BATTERY



520 Wh
integrated battery



630 Wh
integrated battery



630 Wh
semi-integrated battery
for eCargo

CASE AND COVER



ACCESSORIES

SPIDER

LOCK NUT & TOOL

SPEED SENSOR, MAGNET, CABLE & HOLDER

CHAIN GUIDE

LIGHT FRONT CABLE & LIGHT REAR CABLE

MOTOR TO BATTERY CABLE

DISPLAY CABLE

DIAGNOSTIC CABLE

SPORT

RIGHT PERFORMANCES FOR DIFFERENT eBIKE SEGMENTS



250W

Rated Power

85Nm

Max Torque

3,5Kg

Weight

eCARGO

eTREKKING

eCITY

> ALL YOU NEED, BUT SMOOTHER

It offers high torque at very low rpm for a stable experience. Thanks to its extraordinary performance it behaves brilliantly in every situation and is able to deal with the most critical situations. Nothing scares it, Ideal for Cargo Bike.

> CONNECTION PORTS

- Power
- Battery
- Speed sensor
- Display
- Light rear
- Light front

> TECHNOLOGY

OLI's workhorse features a dual-stage internal gear transmission and the most accurate torque sensor in the industry.

A carefully refined software delivers a lot of torque at very low rpm to give the rider a smooth riding experience.

The electric motor internals are directly derived from OLI group know-how in the electric motor industry ensuring a lifetime strength.

> MOUNTING POINTS

Proprietary pattern



SPORT PLUS

Rated Power	250W
Rated Voltage	36V
Max Torque	85Nm
Internal Gear Stages	2
Weight	3,5kg
Communication	UART
Fixing Holes Pattern	2x3 M8 Proprietary pattern
Q-Factor	178mm
Chain-line	52mm (142/148mm boost)
Crank interface	ISIS
Chainring options	BCD 104 - 30/44T
Coaster brake option	No
Chain-guide and bashguard	Yes

DISPLAY



RING VISION

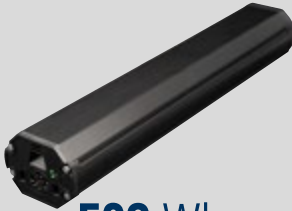


SIDE VISION

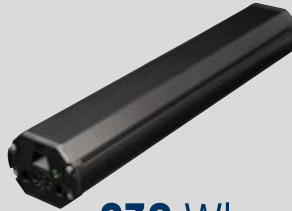


HIGH VISION

BATTERY



520 Wh
integrated battery



630 Wh
integrated battery



630 Wh
semi-integrated battery
for eCargo

CASE AND COVER



@Nuzzi Design

ACCESSORIES

SPIDER

LOCK NUT & TOOL

SPEED SENSOR, MAGNET, CABLE & HOLDER

CHAIN GUIDE

LIGHT FRONT CABLE & LIGHT REAR CABLE

MOTOR TO BATTERY CABLE

DISPLAY CABLE

DIAGNOSTIC CABLE



SERVICE is our strength

Our **Technological Service Center**, located in Italy, responds to every request for assistance throughout Europe, in the dedicated language, within 24 hours.

Thanks to the 6 European OLI eBike subsidiaries, we can resolve assistance requests throughout Europe within 72 hours, with the possibility of quickly sending replacement products.

We have over 2,500 OLI authorized service center active throughout Europe.



TECHNOLOGICAL SERVICE CENTER

from OLI Headquarter responds throughout Europe in a dedicated language.



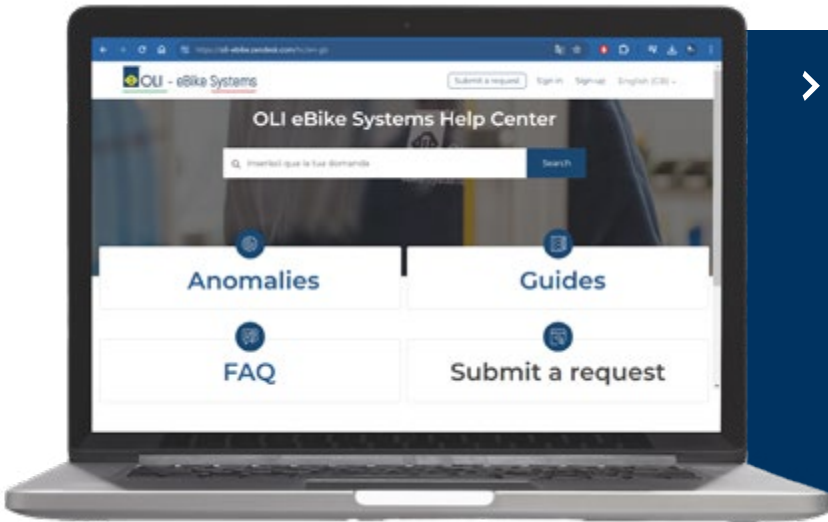
OLI AUTHORIZED SERVICE CENTER

possibility to request assistance at any time and resolution of the problem within 72 hours max.



OLI EBIKE SUBSIDIARY

local stock to receive replacement products immediately



> HELP CENTER

Based on Zendesk, we offer a 24/7 operative platform for dealers.

Through this webpage, OLI service centers can:

- Submit warranty requests
- Download OLI config GUI software
- Download latests firmwares and configurations
- Watch tutorial and training videos

HELP CENTER



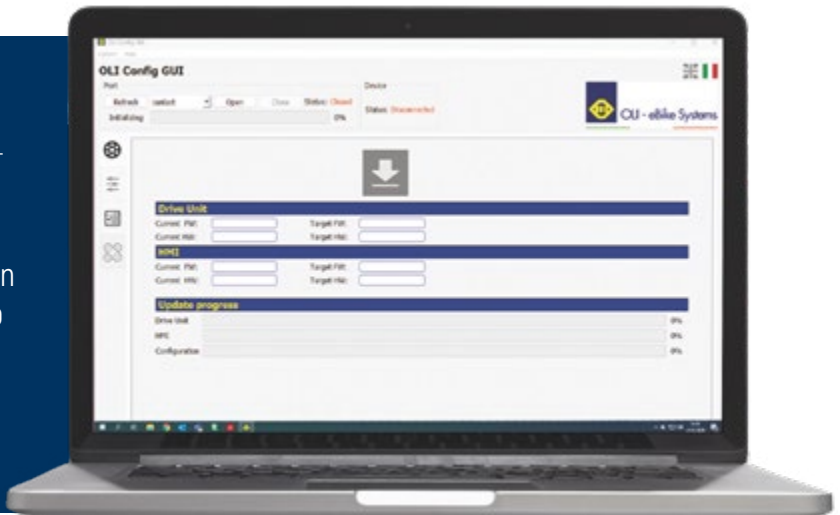
www.oli-ebike.com



> CONFIG GUI 3.0

The diagnostic and firmware update procedures of OLI devices are performed using our OLI CONFIG GUI software, which can be downloaded free of charge from the Help Center download area.

Not compatible with Apple devices.





a **WOLONG** company

OLI eBike Systems srl
Via delle Pesche n. 821, 47522 Cesena (FC) - Italy

Tel. +39 0547 318 322

info@oli-ebike.com
customerservice@oli-ebike.com



www.oli-ebike.com

